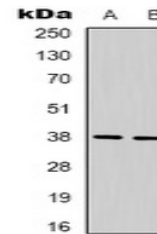


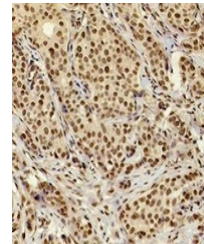
Product Datasheet

XRCC4 antibody (orb323202)

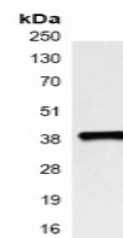
Description	Mouse monoclonal antibody to XRCC4
Species/Host	Mouse
Reactivity	Human
Conjugation	Unconjugated
Tested Applications	IH, IP, WB
Immunogen	KLH-conjugated synthetic peptide encompassing a sequence of human XRCC4. The exact sequence is proprietary.
Target	XRCC4
Preservatives	Liquid in 0.42% Potassium phosphate, 0.87% Sodium chloride, pH 7.3, 30% glycerol, and 0.01% sodium azide.
Form/Appearance	Liquid in 0.42% Potassium phosphate, 0.87% Sodium chloride, pH 7.3, 30% glycerol, and 0.01% sodium azide.
Storage	Maintain refrigerated at 2-8°C for up to 2 weeks. For long term storage store at -20°C in small aliquots to prevent freeze-thaw cycles.
Note	For research use only
Clonality	Monoclonal
Source	Mouse
Uniprot ID	Q13426
Entrez	7518
Dilution Range	WB: 1:1000-1:2000, IHC-P: 1:200-1:500, IP: 1:100-1:200
Expiration Date	12 months from date of receipt.



Western blot analysis of XRCC4 expressio...



Immunohistochemical analysis of XRCC4 st...



Immunoprecipitation of XRCC4 from 0.5 mg...