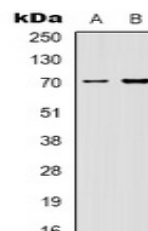


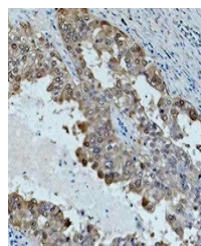
Product Datasheet

HSP70 antibody (orb323173)

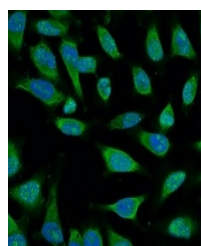
Description	Mouse monoclonal antibody to HSP70
Species/Host	Mouse
Reactivity	Human, Mouse, Rat
Conjugation	Unconjugated
Tested Applications	IF, IH, WB
Immunogen	KLH-conjugated synthetic peptide encompassing a sequence of human HSP70. The exact sequence is proprietary.
Target	HSPA1L; HSPA1A
Preservatives	Liquid in 0.42% Potassium phosphate, 0.87% Sodium chloride, pH 7.3, 30% glycerol, and 0.01% sodium azide.
Form/Appearance	Liquid in 0.42% Potassium phosphate, 0.87% Sodium chloride, pH 7.3, 30% glycerol, and 0.01% sodium azide.
Storage	Maintain refrigerated at 2-8°C for up to 2 weeks. For long term storage store at -20°C in small aliquots to prevent freeze-thaw cycles.
Note	For research use only
Clonality	Monoclonal
Source	Mouse
Uniprot ID	P55063 , Q07439 , P08107 , P16627 , P34931 , Q61696
Entrez	3303 , 193740 , 15482 , 24472 , 24963 , 3305 , 3304
Dilution Range	WB: 1:1000-1:2000, IHC-P: 1:100-1:200, IF/ICC: 1:100-1:200
Expiration Date	12 months from date of receipt.



Western blot analysis of HSP70 expressio...



Immunohistochemical analysis of HSP70 st...



Immunofluorescent analysis of HSP70 stai...