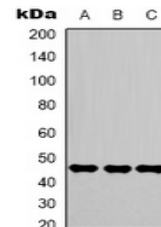


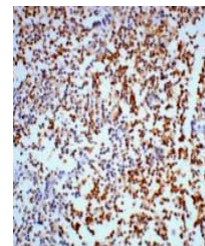
Product Datasheet

Gamma-enolase antibody (orb323145)

Description	Mouse monoclonal antibody to Gamma-enolase
Species/Host	Mouse
Reactivity	Human, Mouse, Rat
Conjugation	Unconjugated
Tested Applications	IH, WB
Immunogen	KLH-conjugated synthetic peptide encompassing a sequence of human Gamma-enolase. The exact sequence is proprietary.
Target	ENO2
Preservatives	Liquid in 0.42% Potassium phosphate, 0.87% Sodium chloride, pH 7.3, 30% glycerol, and 0.01% sodium azide.
Form/Appearance	Liquid in 0.42% Potassium phosphate, 0.87% Sodium chloride, pH 7.3, 30% glycerol, and 0.01% sodium azide.
Storage	Maintain refrigerated at 2-8°C for up to 2 weeks. For long term storage store at -20°C in small aliquots to prevent freeze-thaw cycles.
Note	For research use only
Clonality	Monoclonal
Source	Mouse
Uniprot ID	P09104, P07323, P17183
Entrez	13807, 100911625, 2026
Dilution Range	WB: 1:1000-1:2000, IHC-P: 1:100-1:200
Expiration Date	12 months from date of receipt.



Western blot analysis of Gamma-enolase e...



Immunohistochemical analysis of Gamma-en...