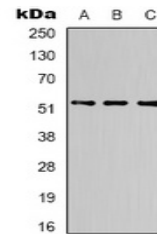


Product Datasheet

Alpha-tubulin antibody (orb323092)

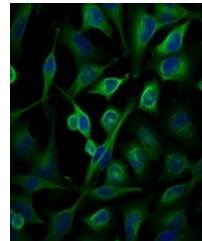
Description	Mouse monoclonal antibody to Alpha-tubulin
Species/Host	Mouse
Reactivity	Human, Mouse, Rat
Conjugation	Unconjugated
Tested Applications	IF, IH, IP, WB
Immunogen	Recombinant protein corresponding to human Alpha-tubulin.
Target	TUBA1A
Preservatives	Liquid in 0.42% Potassium phosphate, 0.87% Sodium chloride, pH 7.3, 0.2% rAlbumin, 30% glycerol, and 0.01% sodium azide.
Form/Appearance	Liquid in 0.42% Potassium phosphate, 0.87% Sodium chloride, pH 7.3, 0.2% rAlbumin, 30% glycerol, and 0.01% sodium azide.
Storage	Maintain refrigerated at 2-8°C for up to 2 weeks. For long term storage store at -20°C in small aliquots to prevent freeze-thaw cycles.
Note	For research use only
Clonality	Monoclonal
Source	Mouse
Uniprot ID	P68370 , P05213 , Q6P9V9 , Q71U36 , P68363 , P68369
Entrez	7846 , 10376 , 64158 , 22142 , 500929 , 22143
Dilution Range	WB: 1:5000-1:10000, IHC-P: 1:200-1:500, IF/ICC: 1:100-1:200, IP: 1:100-1:200
Expiration Date	12 months from date of receipt.



Western blot analysis of Alpha-tubulin e...



Immunohistochemical analysis of Alpha-tu...



Immunofluorescent analysis of Alpha-tubu...