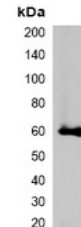


Product Datasheet

mStrawberry-tag antibody (orb323082)

Description	Rabbit polyclonal antibody to mStrawberry-tag
Species/Host	Rabbit
Conjugation	Unconjugated
Tested Applications	WB
Immunogen	Recombinant protein corresponding to mStrawberry-tag.
Preservatives	Liquid in 0.42% Potassium phosphate, 0.87% Sodium chloride, pH 7.3, 30% glycerol, and 0.01% sodium azide.
Form/Appearance	Liquid in 0.42% Potassium phosphate, 0.87% Sodium chloride, pH 7.3, 30% glycerol, and 0.01% sodium azide.
Storage	Shipped at 4°C. Upon delivery aliquot and store at -20°C for one year. Avoid freeze/thaw cycles.
Note	For research use only
Clonality	Polyclonal
Source	Rabbit
Dilution Range	WB: 1:2000-1:5000
Expiration Date	12 months from date of receipt.



Western blot analysis of over-expressed ...