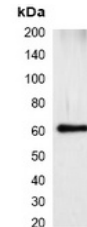


## Product Datasheet

### mStrawberry-tag antibody (orb323056)

|                            |   |
|----------------------------|---|
| <b>Description</b>         | Mouse monoclonal antibody to mStrawberry-tag  |
| <b>Species/Host</b>        | Mouse   |
| <b>Conjugation</b>         | Unconjugated  |
| <b>Tested Applications</b> | WB  |
| <b>Immunogen</b>           | Recombinant protein corresponding to mStrawberry-tag.   |
| <b>Preservatives</b>       | Liquid in 0.42% Potassium phosphate, 0.87% Sodium chloride, pH 7.3, 30% glycerol, and 0.01% sodium azide.                               |
| <b>Form/Appearance</b>     | Liquid in 0.42% Potassium phosphate, 0.87% Sodium chloride, pH 7.3, 30% glycerol, and 0.01% sodium azide.                               |
| <b>Storage</b>             | Maintain refrigerated at 2-8°C for up to 2 weeks. For long term storage store at -20°C in small aliquots to prevent freeze-thaw cycles. |
| <b>Note</b>                | For research use only   |
| <b>Clonality</b>           | Monoclonal  |
| <b>Source</b>              | Mouse   |
| <b>Dilution Range</b>      | WB: 1:2000-1:5000   |
| <b>Expiration Date</b>     | 12 months from date of receipt.   |



Western blot analysis of over-expressed ...