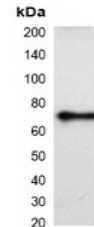


## Product Datasheet

### KT3-tag antibody (orb323051)

<b>Description</b>	Mouse monoclonal antibody to KT3-tag
<b>Species/Host</b>	Mouse
<b>Conjugation</b>	Unconjugated
<b>Tested Applications</b>	WB
<b>Immunogen</b>	KLH-conjugated synthetic peptide encompassing a sequence of KT3-tag. The exact sequence is proprietary.
<b>Preservatives</b>	Liquid in 0.42% Potassium phosphate, 0.87% Sodium chloride, pH 7.3, 30% glycerol, and 0.01% sodium azide.
<b>Form/Appearance</b>	Liquid in 0.42% Potassium phosphate, 0.87% Sodium chloride, pH 7.3, 30% glycerol, and 0.01% sodium azide.
<b>Storage</b>	Maintain refrigerated at 2-8°C for up to 2 weeks. For long term storage store at -20°C in small aliquots to prevent freeze-thaw cycles.
<b>Note</b>	For research use only
<b>Clonality</b>	Monoclonal
<b>Source</b>	Mouse
<b>Dilution Range</b>	WB: 1:2000-1:5000
<b>Expiration Date</b>	12 months from date of receipt.



Western blot analysis of over-expressed ...