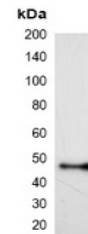


Product Datasheet

HSV-tag antibody (orb323050)

Description	Mouse monoclonal antibody to HSV-tag
Species/Host	Mouse
Conjugation	Unconjugated
Tested Applications	WB
Immunogen	KLH-conjugated synthetic peptide encompassing a sequence of HSV-tag. The exact sequence is proprietary.
Preservatives	Liquid in 0.42% Potassium phosphate, 0.87% Sodium chloride, pH 7.3, 30% glycerol, and 0.01% sodium azide.
Form/Appearance	Liquid in 0.42% Potassium phosphate, 0.87% Sodium chloride, pH 7.3, 30% glycerol, and 0.01% sodium azide.
Storage	Maintain refrigerated at 2-8°C for up to 2 weeks. For long term storage store at -20°C in small aliquots to prevent freeze-thaw cycles.
Note	For research use only
Clonality	Monoclonal
Source	Mouse
Dilution Range	WB: 1:5000-1:10000
Expiration Date	12 months from date of receipt.



Western blot analysis of over-expressed ...