

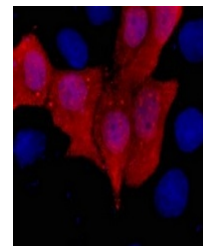
## Product Datasheet

### His-tag antibody (orb323049)

<b>Description</b>	Mouse monoclonal antibody to His-tag
<b>Species/Host</b>	Mouse
<b>Conjugation</b>	Unconjugated
<b>Tested Applications</b>	IF, IP, WB
<b>Immunogen</b>	KLH-conjugated synthetic peptide encompassing a sequence of His-tag. The exact sequence is proprietary.
<b>Preservatives</b>	Liquid in 0.42% Potassium phosphate, 0.87% Sodium chloride, pH 7.3, 30% glycerol, and 0.01% sodium azide.
<b>Form/Appearance</b>	Liquid in 0.42% Potassium phosphate, 0.87% Sodium chloride, pH 7.3, 30% glycerol, and 0.01% sodium azide.
<b>Storage</b>	Shipped at 4°C. Upon delivery aliquot and store at -20°C for one year. Avoid freeze/thaw cycles.
<b>Note</b>	For research use only
<b>Clonality</b>	Monoclonal
<b>Source</b>	Mouse
<b>Dilution Range</b>	WB: 1:1000-1:3000, IF/ICC: 1:100-1:200, IP: 1:50-1:200
<b>Expiration Date</b>	12 months from date of receipt.



Western blot analysis of over-expressed ...



Immunofluorescent analysis of His-tag st...



Immunoprecipitation of His-tagged protei...