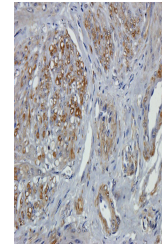


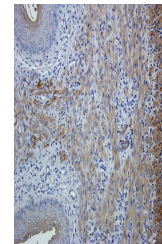
Product Datasheet

Leptin antibody (orb322982)

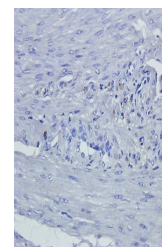
Description	Leptin antibody
Species/Host	Rabbit
Reactivity	Human, Mouse, Rat
Conjugation	Unconjugated
Tested Applications	ELISA, ICC, IF, IHC-P
Immunogen	KLH conjugated synthetic peptide derived from human Leptin. Please contact us for the exact immunogen sequence. The peptide is available as orb374941.
Target	Leptin
Form/Appearance	10 mM PBS, 0.02% sodium azide
Concentration	- 100 µg (in 200 µl): 0.5 mg/ml- 200 µg (in 400 µl): 0.5 mg/ml
Storage	Store at 4°C for up to two weeks. For long term storage, aliquot and store at -20°C, avoid freeze/thaw cycles.
Note	For research use only
Isotype	IgG
Clonality	Polyclonal
Purity	Polyclonal antibodies are purified by peptide affinity chromatography
Uniprot ID	P41159
Dilution Range	IHC-P: 1:100-1000, IF/ICC: 1:100-1000 (based on 0.5mg/ml)
Expiration Date	12 months from date of receipt.



IHC-P staining of human endometrial cancer...



IHC-P image of mouse uterus tissue using...



IHC-P staining of human endometrial cancer...