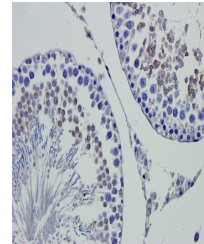


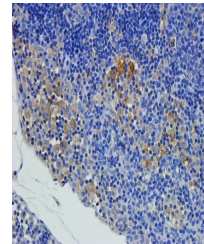
Product Datasheet

DEPDC1 antibody (orb322978)

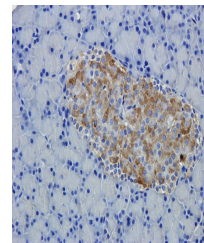
Description	DEPDC1 antibody
Species/Host	Rabbit
Reactivity	Human, Mouse, Rat
Conjugation	Unconjugated
Tested Applications	ELISA, IHC-P
Immunogen	KLH conjugated synthetic peptide derived from human DEPDC1. Please contact us for the exact immunogen sequence. The peptide is available as orb374980.
Target	DEPDC1
Form/Appearance	10 mM PBS, 0.02% sodium azide
Concentration	- 100 µg (in 200 µl): 0.5 mg/ml- 200 µg (in 400 µl): 0.5 mg/ml
Storage	Store at 4°C for up to two weeks. For long term storage, aliquot and store at -20°C, avoid freeze/thaw cycles.
Note	For research use only
Isotype	IgG
Clonality	Polyclonal
Purity	Polyclonal antibodies are purified by peptide affinity chromatography
MW	93 kDa
Uniprot ID	Q5TB30
Entrez	55635
Dilution Range	IHC-P: 1:100-600 (based on 0.5mg/ml)
Expiration Date	12 months from date of receipt.



IHC-P staining of rat testis tissue using...



Immunohistochemical staining of rat blad...



IHC-P image of rat pancreas tissue using...