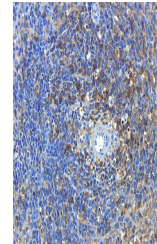


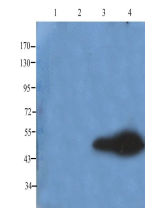
Product Datasheet

Nephrin antibody (orb322977)

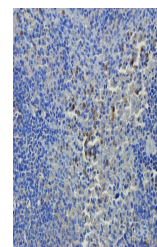
Description	Nephrin antibody
Species/Host	Rabbit
Reactivity	Human, Mouse, Rat
Conjugation	Unconjugated
Tested Applications	ELISA, IHC-P, WB
Immunogen	KLH conjugated synthetic peptide derived from human Nephrin. Please contact us for the exact immunogen sequence. The peptide is available as orb374936.
Target	Nephrin
Form/Appearance	10 mM PBS, 0.02% sodium azide
Concentration	- 100 µg (in 200 µl): 0.5 mg/ml- 200 µg (in 400 µl): 0.5 mg/ml
Storage	Store at 4°C for up to two weeks. For long term storage, aliquot and store at -20°C, avoid freeze/thaw cycles.
Note	For research use only
Isotype	IgG
Clonality	Polyclonal
Purity	Polyclonal antibodies are purified by peptide affinity chromatography
MW	135 kDa
Uniprot ID	Q9R044 , Q9QZS7 , O60500
NCBI	11 , 31 , 004646 , 004637
Entrez	4868
Dilution Range	IHC-P: 1:100-600 (based on 0.5mg/ml), WB: 1:100-500
Expiration Date	12 months from date of receipt.



IHC-P image of mouse spleen tissue using...



WB analysis of rat kidney (lane 1), rat ...



IHC-P staining of mouse spleen tissue US...