
Product Datasheet

Cathepsin G antibody (orb322976)

Description

Cathepsin G antibody

Species/Host

Rabbit

Reactivity

Human, Mouse, Rat

Conjugation

Unconjugated

Tested

ELISA, IHC-P, WB

Applications
Immunogen

KLH conjugated synthetic peptide derived from human Cathepsin G. Please contact us for the exact immunogen sequence. The peptide is available as orb374705.

Target

Cathepsin G

Form/Appearance

10 mM PBS, 0.02% sodium azide

Concentration

- 100 µg (in 200 µl): 0.5 mg/ml- 200 µg (in 400 µl): 0.5 mg/ml

Storage

Store at 4°C for up to two weeks. For long term storage, aliquot and store at -20°C, avoid freeze/thaw cycles.

Note

For research use only

Isotype

IgG

Clonality

Polyclonal

Purity

Polyclonal antibodies are purified by peptide affinity chromatography

MW

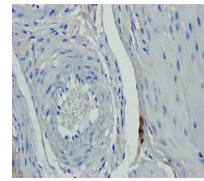
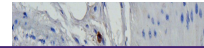
29 kDa

Uniprot ID
[P08311](#), [P28293](#), [G3V9Q7](#)
Entrez
[1511](#)
Dilution Range

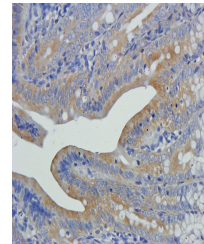
IHC-P: 1:100-600 (based on 0.5mg/ml), WB: 1:100-500

Expiration Date

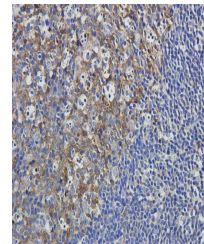
12 months from date of receipt.



IHC-P staining of rat stomach tissue usi...



Immunohistochemical staining of paraffin...



Immunohistochemical staining of rat colo...