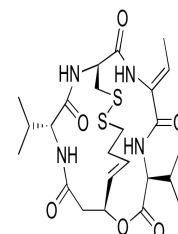


Product Datasheet

Romidepsin (orb322962)

Description	Romidepsin
Storage	Storage Temp: -20°C
Note	For research use only
Formula	C ₂₄ H ₃₆ N ₄ O ₆ S ₂
Purity	≥98%
MW	540.7
CAS Number	128517-07-7
SMILES	<chem>C/C=C\1/C(=O)N[C@H](C(=O)O[C@H]\2CC(=O)N[C@@H](C(=O)N[C@H](C=CC/C=C2)C(=O)N1)C(C)C)C(C)C</chem>
Solubility (25°C)	DMSO 10 mg/mL (18.49 mM) Water Insoluble Ethanol Insoluble
Hazard Information	UN Number: Not dangerous goods
Expiration Date	12 months from date of receipt.



Chemical structure of Romidepsin