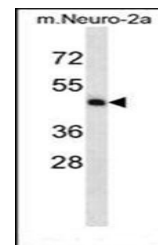
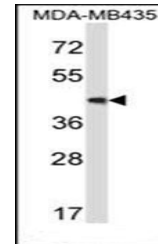


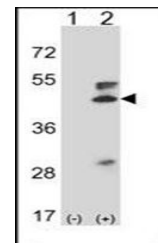
Product Datasheet

Map2k5 antibody (orb32263)

Description	Peptide affinity purified rabbit polyclonal antibody.
Species/Host	Rabbit
Reactivity	Human, Mouse
Conjugation	Unconjugated
Tested Applications	WB
Immunogen	Synthetic Peptide
Target	Map2k5
Form/Appearance	Purified polyclonal antibody supplied in PBS with 0.09% (W/V) sodium azide. This antibody is purified through a protein A column, followed by peptide affinity purification.
Storage	Maintain refrigerated at 2-8°C for up to 2 weeks. For long term storage store at -20°C in small aliquots to prevent freeze-thaw cycles
Note	For research use only
Isotype	Rabbit IgG
Clonality	Polyclonal
MW	50105
Uniprot ID	Q9WVS7
NCBI	NP_035970.1
Dilution Range	WB: 1:1000
Expiration Date	12 months from date of receipt.



Western blot analysis of mouse Neuro-2a ...



Western blot analysis of 293 cell lysate...