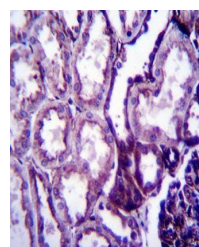
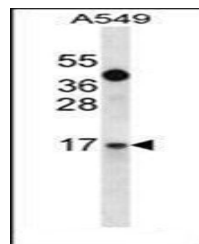


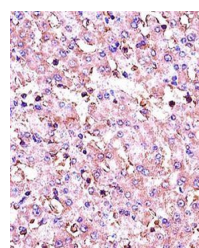
Product Datasheet

IGF1 antibody (orb32196)

Description	Peptide affinity purified rabbit polyclonal antibody.
Species/Host	Rabbit
Reactivity	Human
Conjugation	Unconjugated
Tested Applications	FC, IF, IHC-P, WB
Immunogen	Synthetic Peptide
Target	This IGF1 antibody is generated from rabbits immunized with a KLH conjugated synthetic peptide between 115-144 amino acids from the C-terminal region of human IGF1.
Form/Appearance	Purified polyclonal antibody supplied in PBS with 0.09% (W/V) sodium azide. This antibody is purified through a protein A column, followed by peptide affinity purification.
Storage	Maintain refrigerated at 2-8°C for up to 2 weeks. For long term storage store at -20°C in small aliquots to prevent freeze-thaw cycles
Note	For research use only
Isotype	Rabbit IgG
Clonality	Polyclonal
Uniprot ID	P05019
NCBI	NP_001104755.1 , NP_000609.1 , NP_001104754.1
Dilution Range	WB: 1:1000, IF/ICC: 1:10-50, FACS: 1:10-50, IHC-P: 1:10-50
Expiration Date	12 months from date of receipt.



Immunohistochemical analysis of formalin...



Immunohistochemical analysis of formalin...