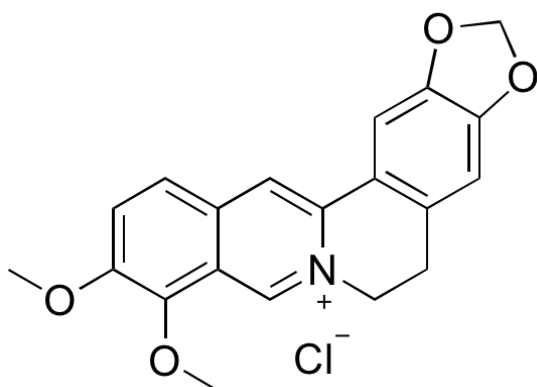


Product Datasheet

Berberine Chloride (orb320461)

Description	Berberine Chloride
Storage	Stability: Protect from light.. Storage Temp: Ambient
Note	For research use only
Application notes	Yellow crystalline powder
Formula	$C_{20}H_{18}NO_4 Cl$
Purity	≥97%
MW	371.82
CAS Number	633-65-8
SMILES	<chem>COC1=C(C2=C[N+]3=C(C=C2C=C1)C4=CC5=C(C=C4CC3)OCO5)OC.[Cl-]</chem>
Solubility (25°C)	Soluble in boiling water. Slightly soluble in cold water. Soluble in methanol > 20 mg/mL. Soluble in ethanol > 2 mg/mL. Soluble in DMSO 74 mg/mL. Slightly soluble in chloroform.
Hazard Information	Chemical Hazard Code: Xn, Xi. UN Number: Not dangerous goods
Expiration Date	12 months from date of receipt.



Chemical structure of Berberine Chloride

Biorbyt Ltd.

7 Signet Court, Swann's Road,
Cambridge, CB5 8LA, United Kingdom
Email: info@biorbyt.com, support@biorbyt.com
Phone: [+44 \(0\) 1223 859-353](tel:+44(0)1223859353) | Fax: [+1 \(415\) 651-8558](tel:+1(415)6518558)

Biorbyt LLC.

68 TW Alexander Drive,
Durham, NC, 27713, United States
Email: info@biorbyt.com, support@biorbyt.com
Phone: [+1 \(415\) 906-5211](tel:+1(415)9065211) | Fax: [+1 \(415\) 651-8558](tel:+1(415)6518558)