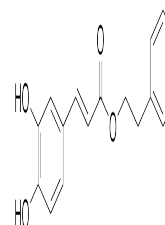


## Product Datasheet

### Phenethyl Caffeate (orb320338)

<b>Description</b>	Phenethyl Caffeate
<b>Storage</b>	Storage Temp: -20°C
<b>Note</b>	For research use only
<b>Application notes</b>	Light yellow powder
<b>Formula</b>	$C_{17}H_{16}O_4$
<b>Purity</b>	≥98%
<b>MW</b>	284.31
<b>CAS Number</b>	104594-70-9
<b>SMILES</b>	<chem>C1=CC=C(C=C1)CCOC(=O)C=CC2=CC(=C(C=C2)O)O</chem>
<b>Solubility (25°C)</b>	Insoluble in water. Soluble in DMSO, or ethanol.
<b>Hazard Information</b>	Chemical Hazard Code: Xi. UN Number: Not dangerous goods
<b>Expiration Date</b>	12 months from date of receipt.



Chemical structure of Phenethyl Caffeate