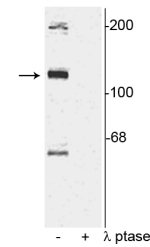


Product Datasheet

TAO2 (Ser181) Antibody (orb319679)

Description	Our Anti-TAO2 (Ser181) rabbit polyclonal phosphospecific primary antibody from Biorbyt is produced i...
Species/Host	Rabbit
Reactivity	Human, Mouse, Rat
Conjugation	Unconjugated
Tested Applications	WB
Immunogen	Synthetic phospho-peptide corresponding to amino acid residues surrounding Ser181 of human TAO2, conjugated to keyhole limpet hemocyanin (KLH).
Target	TAO2 (Ser181)
Preservatives	10 mM HEPES (pH 7.5), 150 mM NaCl, 100 µg per ml rAlbumin and 50% glycerol.
Form/Appearance	Antigen Affinity Purified from Pooled Serum
Storage	Storage at -20°C is recommended, as aliquots may be taken without freeze/thawing due to presence of 50% glycerol. Stable for at least 1 year at -20°C.
Note	For research use only
Isotype	IgG
Clonality	Polyclonal
MW	120
Uniprot ID	Q9UL54
Dilution Range	WB: 1:1000
Expiration Date	12 months from date of receipt.



Western blot analysis of rat cortical ly...