
Product Datasheet

FCGRT/FcRn antibody (orb319444)

Description

FCGRT/FcRn antibody

Species/Host

Rabbit

Reactivity

Human, Mouse, Rat

Conjugation

Unconjugated

Tested

ELISA, IHC-P

Applications
Immunogen

KLH conjugated synthetic peptide derived from human FCGRT/FcRn. Please contact us for the exact immunogen sequence. The peptide is available as orb374930.

Target

FCGRT/FcRn. Recognizes endogenous levels of FCGRT/FcRn protein

Form/Appearance

10 mM PBS, 0.02% sodium azide

Concentration

- 100 µg (in 200 µl): 0.5 mg/ml- 200 µg (in 400 µl): 0.5 mg/ml

Storage

Store at 4°C for up to two weeks. For long term storage, aliquot and store at -20°C, avoid freeze/thaw cycles.

Note

For research use only

Isotype

IgG

Clonality

Polyclonal

Purity

Polyclonal antibodies are purified by peptide affinity chromatography

MW

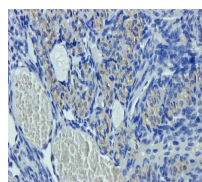
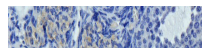
37 kDa

Uniprot ID
[P55899](#)
Entrez
[2217](#)
Dilution Range

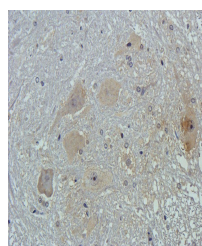
IHC-P: 1:100-500 (based on 0.5 mg/ml)

Expiration Date

12 months from date of receipt.



Immunohistochemical staining of mouse ovary...



IHC-P staining of rat spinal cord tissue...