
Product Datasheet

Osteocalcin antibody (orb319442)

Description

Osteocalcin antibody

Species/Host

Rabbit

Reactivity

Human, Mouse, Rat

Conjugation

Unconjugated

Tested Applications

ELISA, IHC-P, WB

Immunogen

KLH conjugated synthetic peptide derived from human Osteocalcin. Please contact us for the exact immunogen sequence. The peptide is available as orb374928.

Target

Osteocalcin. Recognizes endogenous levels of Osteocalcin protein

Form/Appearance

10 mM PBS, 0.02% sodium azide

Concentration

- 100 µg (in 200 µl): 0.5 mg/ml- 200 µg (in 400 µl): 0.5 mg/ml

Storage

Store at 4°C for up to two weeks. For long term storage, aliquot and store at -20°C, avoid freeze/thaw cycles.

Note

For research use only

Isotype

IgG

Clonality

Polyclonal

Purity

Polyclonal antibodies are purified by peptide affinity chromatography

MW

11 kDa

NCBI
[001020083](#), [001024912](#)
Entrez
[634](#)
Dilution Range

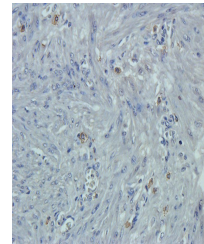
IHC-P: 1:100-300, WB: 1:100-500 (based on 0.5mg/ml)

Expiration Date

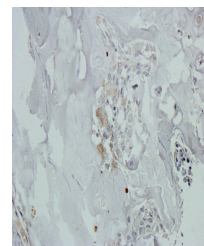
12 months from date of receipt.



Immunohistochemical staining of paraffin...



Immunohistochemical staining of human en...



IHC-P staining of rat gristle tissue usi...