
Product Datasheet

beta Lactoglobulin antibody (orb319441)

Description

beta Lactoglobulin antibody

Species/Host

Rabbit

Reactivity

Bovine

Conjugation

Unconjugated

Tested

ELISA, WB

Applications
Immunogen

KLH conjugated synthetic peptide derived from human beta Lactoglobulin. Please contact us for the exact immunogen sequence. The peptide is available as orb374927.

Target

beta Lactoglobulin. Recognizes endogenous levels of beta Lactoglobulin protein

Form/Appearance

10 mM PBS, 0.02% sodium azide

Concentration

- 100 µg (in 200 µl): 0.5 mg/ml- 200 µg (in 400 µl): 0.5 mg/ml

Storage

Store at 4°C for up to two weeks. For long term storage, aliquot and store at -20°C, avoid freeze/thaw cycles.

Note

For research use only

Application notes

This antibody blocked with normal goat serum, loading 200 ng milk lysate.

Isotype

IgG

Clonality

Polyclonal

Purity

Polyclonal antibodies are purified by peptide affinity chromatography

MW

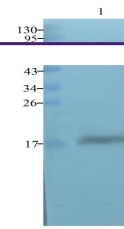
17 kDa

Uniprot ID
[Q32P89](https://www.uniprot.org/entry/Q32P89)
Dilution Range

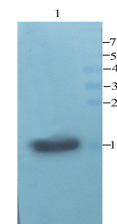
WB: 1:100-1000

Expiration Date

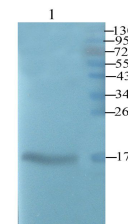
12 months from date of receipt.



Western blot analysis of bovine milk tis...



WB analysis of bovine milk tissue using ...



WB analysis of bovine milk tissue using ...