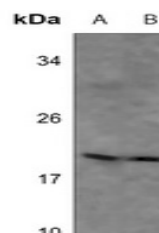


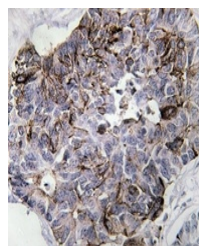
Product Datasheet

MYL9 antibody (orb318918)

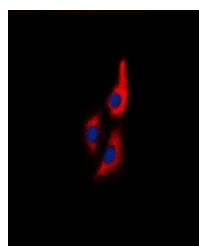
Description	Rabbit polyclonal antibody to MYL9
Species/Host	Rabbit
Reactivity	Human, Mouse, Porcine, Rat
Conjugation	Unconjugated
Tested Applications	IF, IH, WB
Immunogen	KLH-conjugated synthetic peptide encompassing a sequence within the N-term region of human MYL9. The exact sequence is proprietary.
Target	MYL9
Preservatives	Liquid in 0.42% Potassium phosphate, 0.87% Sodium chloride, pH 7.3, 30% glycerol, and 0.01% sodium azide.
Form/Appearance	Liquid in 0.42% Potassium phosphate, 0.87% Sodium chloride, pH 7.3, 30% glycerol, and 0.01% sodium azide.
Storage	Shipped at 4°C. Upon delivery aliquot and store at -20°C for one year. Avoid freeze/thaw cycles.
Note	For research use only
Clonality	Polyclonal
Source	Rabbit
Uniprot ID	Q9CQ19 , Q64122 , P24844 , P19105
Entrez	296313 , 10398 , 10627 , 98932
Dilution Range	WB: 1:500-1:1000, IF/ICC: 1:100-1:500
Expiration Date	12 months from date of receipt.



Western blot analysis of MYL9 expression...



Immunohistochemical analysis of MYL9 sta...



Immunofluorescent analysis of MYL9 stain...