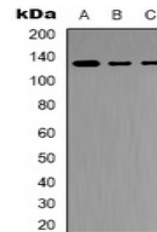


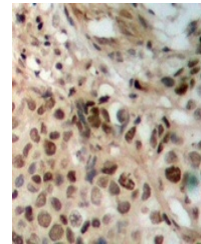
Product Datasheet

JAK2 antibody (orb318917)

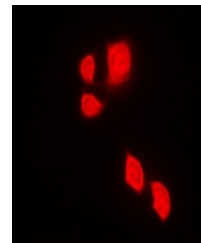
Description	Rabbit polyclonal antibody to JAK2 also known as JAK-2 whose expression can be detected in whole-bod...
Species/Host	Rabbit
Reactivity	Human, Mouse, Porcine, Primate, Rabbit, Rat
Conjugation	Unconjugated
Tested Applications	IF, IH, WB
Immunogen	KLH-conjugated synthetic peptide encompassing a sequence within the center region of human JAK2. The exact sequence is proprietary.
Target	JAK2
Preservatives	Liquid in 0.42% Potassium phosphate, 0.87% Sodium chloride, pH 7.3, 30% glycerol, and 0.01% sodium azide.
Form/Appearance	Liquid in 0.42% Potassium phosphate, 0.87% Sodium chloride, pH 7.3, 30% glycerol, and 0.01% sodium azide.
Storage	Shipped at 4°C. Upon delivery aliquot and store at -20°C for one year. Avoid freeze/thaw cycles.
Note	For research use only
Clonality	Polyclonal
Source	Rabbit
Uniprot ID	Q62689 , Q62120 , O60674
Entrez	3717 , 24514 , 16452
Dilution Range	WB: 1:500-1000, IHC-P: 1:100-200, IF/ICC: 1:100-500
Expiration Date	12 months from date of receipt.



Western blot analysis of JAK2 expression...



Immunohistochemical analysis of JAK2 sta...



Immunofluorescent analysis of JAK2 stain...