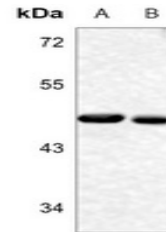


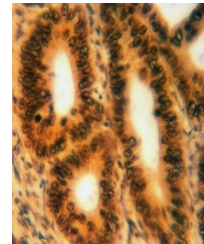
Product Datasheet

YBX1 (phospho-S102) antibody (orb318915)

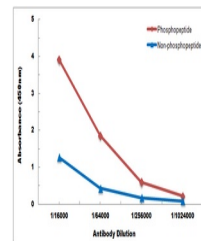
Description	Rabbit polyclonal antibody to YBX1 (Phospho-S102)
Species/Host	Rabbit
Reactivity	Human, Mouse, Rabbit, Rat
Conjugation	Unconjugated
Tested Applications	IH, WB
Immunogen	KLH-conjugated synthetic phosphopeptide corresponding to residues surrounding S102 of human YBX1 protein. The exact sequence is proprietary.
Target	YBX1
Preservatives	Liquid in 0.42% Potassium phosphate, 0.87% Sodium chloride, pH 7.3, 30% glycerol, and 0.01% sodium azide.
Form/Appearance	Liquid in 0.42% Potassium phosphate, 0.87% Sodium chloride, pH 7.3, 30% glycerol, and 0.01% sodium azide.
Storage	Maintain refrigerated at 2-8°C for up to 2 weeks. For long term storage store at -20°C in small aliquots to prevent freeze-thaw cycles.
Note	For research use only
Clonality	Polyclonal
Source	Rabbit
Uniprot ID	P62960, P67809, P62961
Entrez	500538, 22608, 4904
Dilution Range	WB: 1:500-1:1000
Expiration Date	12 months from date of receipt.



Western blot analysis of YBX1 (Phospho-S...



Immunohistochemical analysis of YBX1 (Ph...



Direct ELISA antibody dose-response curv...