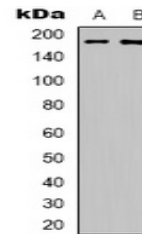


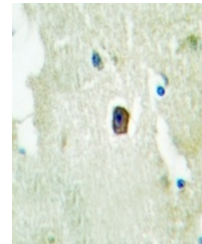
Product Datasheet

ERBB3 (phospho-Y1289) antibody (orb318913)

Description	Rabbit polyclonal antibody to HER3 (Phospho-Y1289)
Species/Host	Rabbit
Reactivity	Human, Mouse, Rat
Conjugation	Unconjugated
Tested Applications	IF, IH, WB
Immunogen	KLH-conjugated synthetic phosphopeptide corresponding to residues surrounding Y1289 of human HER3 protein. The exact sequence is proprietary.
Target	ERBB3
Preservatives	Liquid in 0.42% Potassium phosphate, 0.87% Sodium chloride, pH 7.3, 30% glycerol, and 0.01% sodium azide.
Form/Appearance	Liquid in 0.42% Potassium phosphate, 0.87% Sodium chloride, pH 7.3, 30% glycerol, and 0.01% sodium azide.
Storage	Maintain refrigerated at 2-8°C for up to 2 weeks. For long term storage store at -20°C in small aliquots to prevent freeze-thaw cycles.
Note	For research use only
Clonality	Polyclonal
Source	Rabbit
Uniprot ID	Q62799 , Q61526 , P21860
Entrez	29496 , 13867 , 2065
Dilution Range	WB: 1:500-1:1000
Expiration Date	12 months from date of receipt.



Western blot analysis of HER3 (Phospho-Y...



Immunohistochemical analysis of HER3 (Ph...



Immunofluorescent analysis of HER3 (Phos...