
Product Datasheet

MAPK14 (phospho-T180/Y182) antibody (orb318860)

Description

Rabbit polyclonal antibody to p38 (Phospho-

Species/Host

Rabbit

Reactivity

Human, Mouse, Rat, Zebrafish

Conjugation

Unconjugated

Tested Applications

IH, WB

Immunogen

KLH-conjugated synthetic phosphopeptide corresponding to residues surrounding T180/Y182 of human p38 protein. The exact sequence is proprietary.

Target

MAPK14

Preservatives

Liquid in 0.42% Potassium phosphate, 0.87% Sodium chloride, pH 7.3, 30% glycerol, and 0.01% sodium azide.

Form/Appearance

Liquid in 0.42% Potassium phosphate, 0.87% Sodium chloride, pH 7.3, 30% glycerol, and 0.01% sodium azide.

Storage

Maintain refrigerated at 2-8°C for up to 2 weeks. For long term storage store at -20°C in small aliquots to prevent freeze-thaw cycles.

Note

For research use only

Clonality

Polyclonal

Source

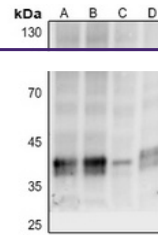
Rabbit

Uniprot ID
[P47811](#), [P70618](#), [Q16539](#)
Entrez
[1432](#), [26416](#)
Dilution Range

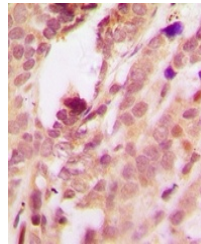
WB: 1:500-1:1000, IHC-P: 1:100-1:200, IP: 1:10-1:100

Expiration Date

12 months from date of receipt.



Western blot analysis of p38 (Phospho-T180/Y182) in four lanes (A, B, C, D).



Immunohistochemical analysis of p38 (Phospho-T180/Y182) in tissue sections.