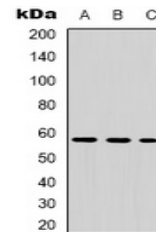


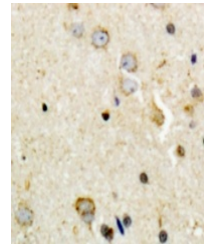
## Product Datasheet

### TH (phospho-S8) antibody (orb318859)

|                            |  |
|----------------------------|--|
| <b>Description</b>         | Rabbit polyclonal antibody to Tyrosine Hydroxylase (Phospho-S8)  |
| <b>Species/Host</b>        | Rabbit   |
| <b>Reactivity</b>          | Human, Mouse, Rat  |
| <b>Conjugation</b>         | Unconjugated   |
| <b>Tested Applications</b> | IH, WB   |
| <b>Immunogen</b>           | KLH-conjugated synthetic phosphopeptide corresponding to residues surrounding S8 of human Tyrosine Hydroxylase protein. The exact sequence is proprietary. |
| <b>Target</b>              | TH   |
| <b>Preservatives</b>       | Liquid in 0.42% Potassium phosphate, 0.87% Sodium chloride, pH 7.3, 30% glycerol, and 0.01% sodium azide.  |
| <b>Form/Appearance</b>     | Liquid in 0.42% Potassium phosphate, 0.87% Sodium chloride, pH 7.3, 30% glycerol, and 0.01% sodium azide.  |
| <b>Storage</b>             | Maintain refrigerated at 2-8°C for up to 2 weeks. For long term storage store at -20°C in small aliquots to prevent freeze-thaw cycles.                    |
| <b>Note</b>                | For research use only  |
| <b>Clonality</b>           | Polyclonal   |
| <b>Source</b>              | Rabbit   |
| <b>Uniprot ID</b>          | <b>P04177, P07101</b>  |
| <b>Entrez</b>              | <b>25085</b>   |
| <b>Dilution Range</b>      | WB: 1:500-1:1000, IHC-P: 1:100-1:200, IP: 1:10-1:100   |
| <b>Expiration Date</b>     | 12 months from date of receipt.  |



Western blot analysis of Tyrosine Hydroxylase.



Immunohistochemical analysis of Tyrosine Hydroxylase.