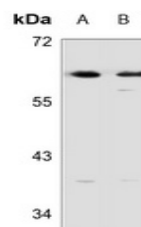


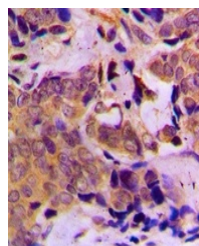
Product Datasheet

DOK1 antibody (orb318856)

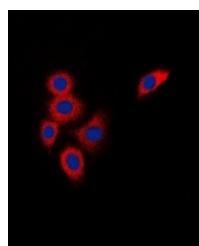
Description	Rabbit polyclonal antibody to DOK1
Species/Host	Rabbit
Reactivity	Human, Mouse, Rat
Conjugation	Unconjugated
Tested Applications	IF, IH, WB
Immunogen	KLH-conjugated synthetic peptide encompassing a sequence within the center region of human DOK1. The exact sequence is proprietary.
Target	DOK1
Preservatives	Liquid in 0.42% Potassium phosphate, 0.87% Sodium chloride, pH 7.3, 30% glycerol, and 0.01% sodium azide.
Form/Appearance	Liquid in 0.42% Potassium phosphate, 0.87% Sodium chloride, pH 7.3, 30% glycerol, and 0.01% sodium azide.
Storage	Maintain refrigerated at 2-8°C for up to 2 weeks. For long term storage store at -20°C in small aliquots to prevent freeze-thaw cycles.
Note	For research use only
Clonality	Polyclonal
Source	Rabbit
Uniprot ID	P97465 , Q4QQV2 , Q99704
Entrez	13448 , 312477 , 1796
Dilution Range	WB: 1:500-1:1000, IHC-P: 1:100-1:200, IF/ICC: 1:100-1:500
Expiration Date	12 months from date of receipt.



Western blot analysis of DOK1 expression...



Immunohistochemical analysis of DOK1 sta...



Immunofluorescent analysis of DOK1 stain...