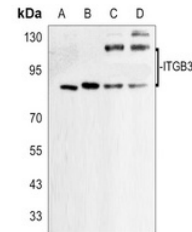


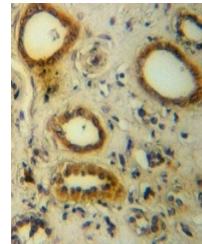
Product Datasheet

ITGB3 antibody (orb318849)

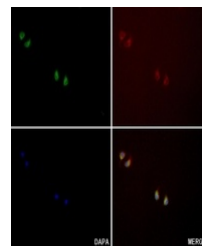
Description	Rabbit polyclonal antibody to CD61
Species/Host	Rabbit
Reactivity	Human, Mouse, Primate, Rat
Conjugation	Unconjugated
Tested Applications	IF, IH, WB
Immunogen	KLH-conjugated synthetic peptide encompassing a sequence within the C-term region of human CD61. The exact sequence is proprietary.
Target	ITGB3
Preservatives	Liquid in 0.42% Potassium phosphate, 0.87% Sodium chloride, pH 7.3, 30% glycerol, and 0.01% sodium azide.
Form/Appearance	Liquid in 0.42% Potassium phosphate, 0.87% Sodium chloride, pH 7.3, 30% glycerol, and 0.01% sodium azide.
Storage	Maintain refrigerated at 2-8°C for up to 2 weeks. For long term storage store at -20°C in small aliquots to prevent freeze-thaw cycles.
Note	For research use only
Clonality	Polyclonal
Source	Rabbit
Uniprot ID	P05106, O54890
Entrez	16416, 3690
Dilution Range	WB: 1:500-1:1000
Expiration Date	12 months from date of receipt.



Western blot analysis of CD61 expression...



Immunohistochemical analysis of CD61 sta...



Immunofluorescent analysis of CD61 stain...