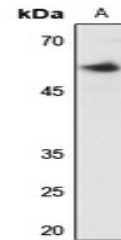


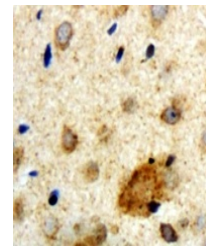
Product Datasheet

CORO1A antibody (orb318776)

Description	Rabbit polyclonal antibody to Clipin A
Species/Host	Rabbit
Reactivity	Human, Mouse, Porcine, Primate, Rat
Conjugation	Unconjugated
Tested Applications	IH, WB
Immunogen	KLH-conjugated synthetic peptide encompassing a sequence within the center region of human Clipin A. The exact sequence is proprietary.
Target	CORO1A
Preservatives	Liquid in 0.42% Potassium phosphate, 0.87% Sodium chloride, pH 7.3, 30% glycerol, and 0.01% sodium azide.
Form/Appearance	Liquid in 0.42% Potassium phosphate, 0.87% Sodium chloride, pH 7.3, 30% glycerol, and 0.01% sodium azide.
Storage	Maintain refrigerated at 2-8°C for up to 2 weeks. For long term storage store at -20°C in small aliquots to prevent freeze-thaw cycles.
Note	For research use only
Clonality	Polyclonal
Source	Rabbit
Uniprot ID	P31146 , O89053
Entrez	12721 , 11151
Dilution Range	WB: 1:500-1:1000, IHC-P: 1:100-1:200, IP: 1:10-1:100
Expiration Date	12 months from date of receipt.



Western blot analysis of Clipin A expres...



Immunohistochemical analysis of Clipin A...