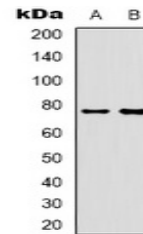


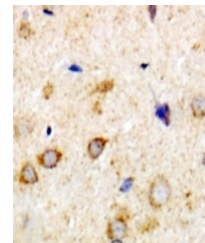
Product Datasheet

RPH3A antibody (orb318766)

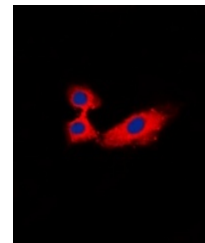
Description	Rabbit polyclonal antibody to Rabphilin 3A
Species/Host	Rabbit
Reactivity	Human, Mouse, Rat
Conjugation	Unconjugated
Tested Applications	IF, IH, WB
Immunogen	KLH-conjugated synthetic peptide encompassing a sequence within the center region of human Rabphilin 3A. The exact sequence is proprietary.
Target	RPH3A
Preservatives	Liquid in 0.42% Potassium phosphate, 0.87% Sodium chloride, pH 7.3, 30% glycerol, and 0.01% sodium azide.
Form/Appearance	Liquid in 0.42% Potassium phosphate, 0.87% Sodium chloride, pH 7.3, 30% glycerol, and 0.01% sodium azide.
Storage	Maintain refrigerated at 2-8°C for up to 2 weeks. For long term storage store at -20°C in small aliquots to prevent freeze-thaw cycles.
Note	For research use only
Clonality	Polyclonal
Source	Rabbit
Uniprot ID	P47708 , Q9Y2J0 , P47709
Entrez	19894 , 22895 , 171039
Dilution Range	WB: 1:500-1:1000, IHC-P: 1:100-1:200, IF/ICC: 1:100-1:500
Expiration Date	12 months from date of receipt.



Western blot analysis of Rabphilin 3A ex...



Immunohistochemical analysis of Rabphili...



Immunofluorescent analysis of Rabphiliin

...