

---

## Product Datasheet

**PTEN (phospho-S380/T382/T383) antibody  
(orb318759)**

**Description**

Rabbit polyclonal antibody to PTEN (Phospho-

**Species/Host**

Rabbit

**Reactivity**

Human, Mouse, Rat, Zebrafish

**Conjugation**

Unconjugated

**Tested Applications**

IF, IH, WB

**Immunogen**

KLH-conjugated synthetic phosphopeptide corresponding to residues surrounding S380/T382/T383 of human PTEN protein. The exact sequence is proprietary.

**Target**

PTEN

**Preservatives**

Liquid in 0.42% Potassium phosphate, 0.87% Sodium chloride, pH 7.3, 30% glycerol, and 0.01% sodium azide.

**Form/Appearance**

Liquid in 0.42% Potassium phosphate, 0.87% Sodium chloride, pH 7.3, 30% glycerol, and 0.01% sodium azide.

**Storage**

Shipped at 4°C. Upon delivery aliquot and store at -20°C for one year. Avoid freeze/thaw cycles.

**Note**

For research use only

**Clonality**

Polyclonal

**Source**

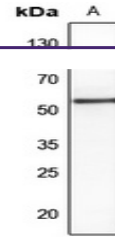
Rabbit

**Uniprot ID**
[O08586](#), [P60484](#)
**Entrez**
[19211](#), [5728](#)
**Dilution Range**

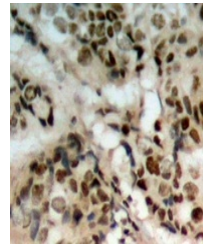
WB: 1:500-1:1000, IHC-P: 1:100-1:200, IF/ICC: 1:100-1:500, IP: 1:10-1:100

**Expiration Date**

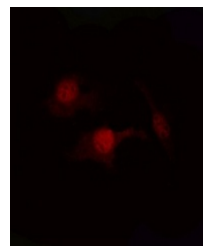
12 months from date of receipt.



Western blot analysis of PTEN (Phospho-S...



Immunohistochemical analysis of PTEN (Phos...



Immunofluorescent analysis of PTEN (Phos...