
Product Datasheet

IL4 antibody (orb318727)

Description

IL4 antibody

Species/Host

Rabbit

Reactivity

Human, Mouse, Rat

Conjugation

Unconjugated

Tested Applications

ELISA, IHC-P

Applications
Immunogen

KLH conjugated synthetic peptide derived from human IL4. Please contact us for the exact immunogen sequence. The peptide is available as orb374924.

Target

IL4

Form/Appearance

10 mM PBS, 0.02% sodium azide

Concentration

- 100 µg (in 200 µl): 0.5 mg/ml- 200 µg (in 400 µl): 0.5 mg/ml

Storage

Store at 4°C for up to two weeks. For long term storage, aliquot and store at -20°C, avoid freeze/thaw cycles.

Note

For research use only

Isotype

IgG

Clonality

Polyclonal

Purity

Polyclonal antibodies are purified by peptide affinity chromatography

MW

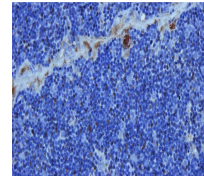
17 kDa

Uniprot ID
[P20096](#), [P07750](#), [P05112](#)
NCBI
[21](#), [172374](#), [758962](#), [11](#)
Entrez
[3565](#)
Dilution Range

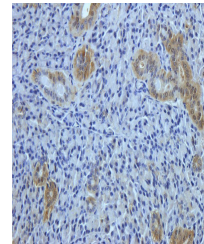
IHC-P: 1:100-800

Expiration Date

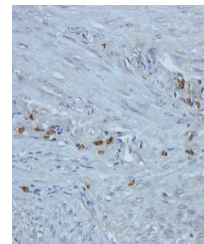
12 months from date of receipt.



IHC-P image of rat thymus tissue using a...



Immunohistochemical staining of mouse lymphoid...



Immunohistochemical staining of paraffin-embedded tissue...