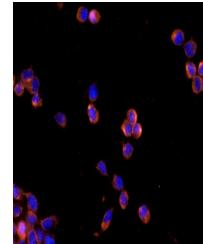


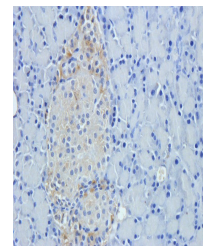
Product Datasheet

IL1RA antibody (orb318726)

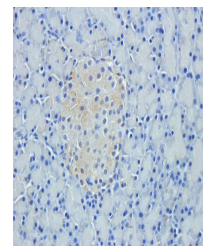
Description	IL1RA antibody
Species/Host	Rabbit
Reactivity	Human, Mouse, Rat
Conjugation	Unconjugated
Tested Applications	ELISA, ICC, IF, IHC-P
Immunogen	KLH conjugated synthetic peptide derived from human IL1RA . Please contact us for the exact immunogen sequence. The peptide is available as orb374923.
Target	IL1RA
Form/Appearance	10 mM PBS, 0.02% sodium azide
Concentration	- 100 µg (in 200 µl): 0.5 mg/ml- 200 µg (in 400 µl): 0.5 mg/ml
Storage	Store at 4°C for up to two weeks. For long term storage, aliquot and store at -20°C, avoid freeze/thaw cycles.
Note	For research use only
Isotype	IgG
Clonality	Polyclonal
Purity	Polyclonal antibodies are purified by peptide affinity chromatography
Uniprot ID	P25085 , P25086 , P18510
NCBI	NP_000568.1
Entrez	3557
Dilution Range	IHC-P: 1:100-300, IF/ICC: 1:100-300
Expiration Date	12 months from date of receipt.



IF image of human 293T cells using IL1 R...



Immunohistochemical staining of paraffin...



IHC-P staining of rat pancreas tissue us...