
Product Datasheet

COPS2 antibody (orb318725)

Description

COPS2 antibody

Species/Host

Rabbit

Reactivity

Human, Mouse, Rat

Conjugation

Unconjugated

Tested Applications

ELISA, IHC-P

Immunogen

KLH conjugated synthetic peptide derived from human COPS2. Please contact us for the exact immunogen sequence. The peptide is available as orb374922.

Target

COPS2

Form/Appearance

10 mM PBS, 0.02% sodium azide

Concentration

- 100 µg (in 200 µl): 0.5 mg/ml- 200 µg (in 400 µl): 0.5 mg/ml

Storage

Store at 4°C for up to two weeks. For long term storage, aliquot and store at -20°C, avoid freeze/thaw cycles.

Note

For research use only

Isotype

IgG

Clonality

Polyclonal

Purity

Polyclonal antibodies are purified by peptide affinity chromatography

MW

52 kDa

Uniprot ID

[P61203](#), [P61202](#), [P61201](#)

NCBI

[001143887](#), [001137359](#)

Entrez

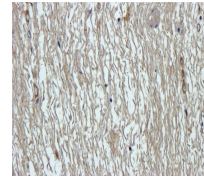
[9318](#)

Dilution Range

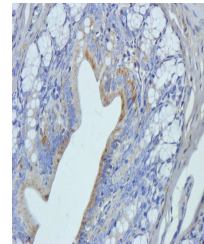
IHC-P: 1:100-500

Expiration Date

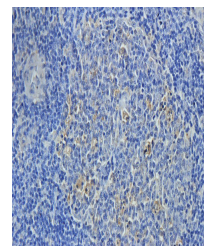
12 months from date of receipt.



Immunohistochemical staining of paraffin...



IHC-P image of rat colon tissue using an...



Immunohistochemical staining of paraffin...