
Product Datasheet

IL4 antibody (orb318722)

Description

IL4 antibody

Species/Host

Rabbit

Reactivity

Human, Mouse, Rat

Conjugation

Unconjugated

Tested

ELISA, IHC-P

Applications
Immunogen

KLH conjugated synthetic peptide derived from human IL4. Please contact us for the exact immunogen sequence. The peptide is available as orb374919.

Target

IL4

Form/Appearance

10 mM PBS, 0.02% sodium azide

Concentration

- 100 µg (in 200 µl): 0.5 mg/ml- 200 µg (in 400 µl): 0.5 mg/ml

Storage

Store at 4°C for up to two weeks. For long term storage, aliquot and store at -20°C, avoid freeze/thaw cycles.

Note

For research use only

Isotype

IgG

Clonality

Polyclonal

Purity

Polyclonal antibodies are purified by peptide affinity chromatography

MW

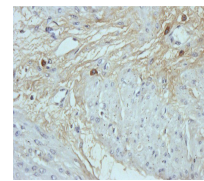
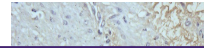
17 kDa

Uniprot ID
[P20096](#), [P07750](#), [P05112](#)
NCBI
[000589](#), [000580](#)
Entrez
[3565](#)
Dilution Range

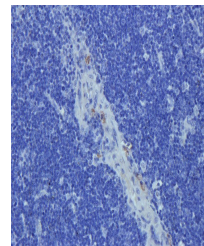
IHC-P: 1:100-500

Expiration Date

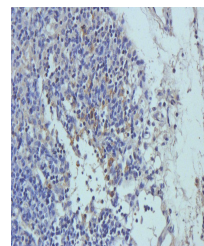
12 months from date of receipt.



IHC-P staining of human endometrial canc...



Immunohistochemical staining of rat thym...



Immunohistochemical staining of paraffin...