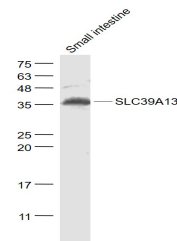


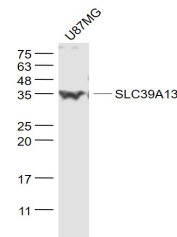
## Product Datasheet

### SLC39A13 antibody (orb317967)

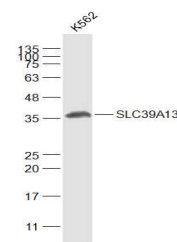
<b>Description</b>	SLC39A13 antibody
<b>Species/Host</b>	Rabbit
<b>Reactivity</b>	Mouse, Rat
<b>Conjugation</b>	Unconjugated
<b>Tested Applications</b>	WB
<b>Immunogen</b>	KLH conjugated synthetic peptide derived from human SLC39A13 (1-100/371 aa)
<b>Target</b>	SLC39A13
<b>Preservatives</b>	Preservative: 15mM Sodium Azide, Constituents: 1% rAlbumin, 0.01M PBS, pH 7.4
<b>Form/Appearance</b>	Liquid
<b>Concentration</b>	1mg/ml
<b>Storage</b>	Shipped at 4°C. Store at -20 °C for one year. Avoid repeated freeze/thaw cycles.
<b>Note</b>	For research use only
<b>Isotype</b>	IgG
<b>Clonality</b>	Polyclonal
<b>MW</b>	39 kDa
<b>Uniprot ID</b>	<b>Q96H72</b>
<b>Dilution Range</b>	WB=1:500-2000
<b>Expiration Date</b>	12 months from date of receipt.



Sample: Small intestine (Mouse) Lysate a...



Sample: U87MG(Human) Cell Lysate at 30 u...



Sample: K562(Human) Cell Lysate at 30 ug...