
Product Datasheet

Histone H1 Antibody (orb317050)

Description

Eukaryotic histones are basic and water-soluble nuclear

Species/Host

Mouse

Reactivity

Human, Mouse, Rat

Conjugation

Unconjugated

Tested Applications

FACS, IF, IHC-P, WB

Immunogen

Nuclei of human leukemia biopsy cells were used as the immunogen for the Histone H1 antibody.

Preservatives

0.2 mg/ml in 1X PBS with 0.1 mg/ml rAlbumin (US sourced) and 0.05% sodium azide

Storage

Store the Histone antibody at 2-8°C (with azide) or aliquot and store at -20°C or colder (without azide).

Note

For research use only

Application notes

Optimal dilution of the Histone antibody should be determined by the researcher.1. Staining of formalin/paraffin tissues requires boiling tissue sections in 10mM Citrate buffer, pH 6.0, for 10-20 min followed by cooling at RT for 20 min.
2. The prediluted format is supplied in a dropper bottle and is optimized for use in IHC. After epitope retrieval step (if required), drip mAb solution onto the tissue section and incubate at RT for 30 min.
3. View the recombinant form of this a [href=../tds/recombinant-histone-h1-antibody-mouse-monoclonal-r1415-1-v3451](https://www.biorbyt.com/tds/recombinant-histone-h1-antibody-mouse-monoclonal-r1415-1-v3451)>Histone H1 antibody.

Formula

0.2 mg/ml in 1X PBS with 0.1 mg/ml BSA (US sourced) and 0.05% sodium azide

Isotype

Mouse IgG2a, kappa

Clonality

Monoclonal

Purity

Protein G affinity chromatography

Uniprot ID

P07305

Hazard Information

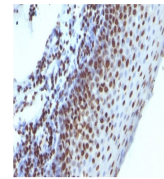
This Histone antibody is available for research use only.

Dilution Range

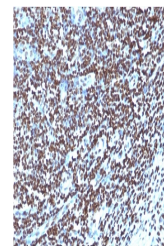
Flow cytometry: 1-2ug/million cells,Immunofluorescence: 1-2ug/ml,Immunohistochemistry (FFPE): 1-2ug/ml for 30 min at RT,Western blot: 1-2ug/ml

Expiration Date

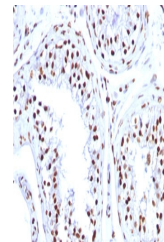
12 months from date of receipt.



IHC:
Formalin-fixed,
paraffin-embedded
h...



IHC:
Formalin-fixed,
paraffin-embedded
h...



IHC: FFPE
human
testicular
carcinoma
tes...