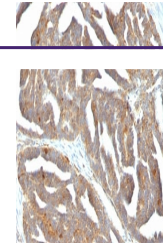

Product Datasheet

GnRH Receptor Antibody / GNRHR (orb317027)

Description

Recognizes an epitope on the extracellular domain of


Species/Host

Mouse

Reactivity

Human, Rat

Conjugation

Unconjugated

Tested Applications

FACS, IF, IHC-P, WB

Immunogen

A synthetic peptide aa 1-29 (MANSASPEQNHCSAINNSIPLMQNLPLY) from the N-terminal of human GnRHR was used as the immunogen for the GnRH Receptor antibody.

Preservatives

0.2 mg/ml in 1X PBS with 0.1 mg/ml rAlbumin (US sourced) and 0.05% sodium azide

Storage

Store the GnRH Receptor antibody at 2-8°C (with azide) or aliquot and store at -20°C or colder (without azide).

Note

For research use only

Application notes

Optimal dilution of the GnRH Receptor antibody should be determined by the researcher. 1. Staining of formalin-fixed tissues requires boiling tissue sections in 10mM Tris with 1mM EDTA, pH 9.0, for 10-20 min followed by cooling at RT for 20 min. 2. The prediluted format is supplied in a dropper bottle and is optimized for use in IHC. After epitope retrieval step (if required), drip mAb solution onto the tissue section and incubate at RT for 30 min.

Formula

0.2 mg/ml in 1X PBS with 0.1 mg/ml BSA (US sourced) and 0.05% sodium azide

Isotype

Mouse IgG1, kappa

Clonality

Monoclonal

Purity

Protein G affinity chromatography

Uniprot ID

P30968

Hazard Information

This GnRH Receptor antibody is available for research use only.

Dilution Range

Flow cytometry: 0.5-1ug/million cells, Immunofluorescence: 1-2ug/ml, Western blot: 1-2ug/ml, Immunohistochemistry (FFPE): 1-2ug/ml for 30 min at RT

Expiration Date

12 months from date of receipt.

IHC:
Formalin-fixed,
paraffin-embedded
h...