
Product Datasheet

alpha MSH antibody (orb316837)

Description

alpha MSH antibody

Species/Host

Rabbit

Reactivity

Human, Mouse, Rat

Conjugation

Unconjugated

Tested Applications

ELISA, ICC, IF, IHC-P

Immunogen

KLH conjugated synthetic peptide derived from human alpha MSH. Please contact us for the exact immunogen sequence. The peptide is available as orb374914.

Target

alpha MSH

Form/Appearance

10 mM PBS, 0.02% sodium azide

Concentration

- 100 µg (in 100 µl): 1 mg/ml- 200 µg (in 200 µl): 1 mg/ml

Storage

Maintain refrigerated at 2-8°C for up to 2 weeks. For long term storage store at -20°C in small aliquots to prevent freeze-thaw cycles.

Note

For research use only

Isotype

IgG

Clonality

Polyclonal

Purity

Polyclonal antibodies are purified by peptide affinity chromatography

MW

29 kDa

Uniprot ID
[P01194](#), [P01189](#), [P01193](#)
NCBI
[000939](#), [000930](#)
Entrez
[5443](#)
Dilution Range

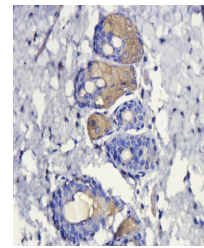
IF/ICC: 1:100, IHC-P:1:200 (based on 0.5 mg/ml)

Expiration Date

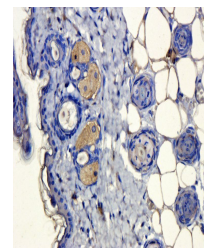
12 months from date of receipt.



Immunohistochemical staining of mouse sk...



Immunohistochemical staining of paraffin...



Immunohistochemical staining of mouse sk...