
Product Datasheet

GLP1/GCG Antibody (orb316568)

Description

GLP1/GCG Antibody

Species/Host

Rabbit

Reactivity

Human, Mouse, Rat

Conjugation

Unconjugated

Tested Applications

IF, IHC

Immunogen

A synthetic peptide corresponding to a sequence at the N-terminus of human GLP1 (53-81aa HSQGTFTSDYSKYLDSSRAQDFVQWLMNT), identical to the related mouse and rat sequences.

Form/Appearance

Lyophilized

Concentration

Adding 0.2 ml of distilled water will yield a concentration of 500 µg/ml.

Storage

Store at -20°C for one year from date of receipt. After reconstitution, at 4°C for one month. It can also be aliquotted and stored frozen at -20°C for six months. Avoid repeated freeze-thaw cycles.

Note

For research use only

Application notes

Tested Species: In-house tested species with positive results.
 By Heat: Boiling the paraffin sections in 10mM citrate buffer, pH6.0, for 20mins is required for the staining of formalin/paraffin sections. Other applications have not been tested. Optimal dilutions should be determined by end users.
 . Add 0.2ml of distilled water will yield a concentration of 500ug/ml.

Isotype

Rabbit IgG

Clonality

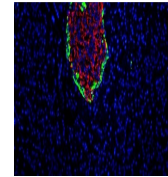
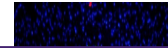
Polyclonal

MW

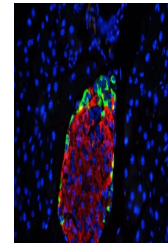
20909 MW

Uniprot ID
P01275
Expiration Date

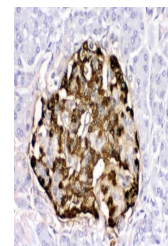
12 months from date of receipt.



IF analysis of GLP1 using anti-GLP1 anti...



IF analysis of GLP1 using anti-GLP1 anti...



IHC analysis of GLP1 using anti-GLP1 ant...