

---

## Product Datasheet

### BMP5 Antibody (orb316552)

**Description**

BMP5 Antibody

**Species/Host**

Rabbit

**Reactivity**

Human, Mouse, Rat

**Conjugation**

Unconjugated

**Tested**

ELISA, FC, IHC, WB

**Applications**
**Immunogen**

A synthetic peptide corresponding to a sequence at the C-terminus of human BMP-5 (332-365aa HQDSSRMSSVGDYNTSEQKQACKKHELYVSRDL), different from the related mouse sequence by three amino acids.

**Form/Appearance**

Lyophilized

**Concentration**

Adding 0.2 ml of distilled water will yield a concentration of 500 µg/ml.

**Storage**

Store at -20°C for one year from date of receipt. After reconstitution, at 4°C for one month. It can also be aliquotted and stored frozen at -20°C for six months. Avoid repeated freeze-thaw cycles.

**Note**

For research use only

**Application notes**

Tested Species: In-house tested species with positive results.  
 By Heat: Boiling the paraffin sections in 10mM citrate buffer, pH6.0, for 20mins is required for the staining of formalin/paraffin sections. Other applications have not been tested. Optimal dilutions should be determined by end users. .  
 Add 0.2ml of distilled water will yield a concentration of 500ug/ml.

**Isotype**

Rabbit IgG

**Clonality**

Polyclonal

**MW**

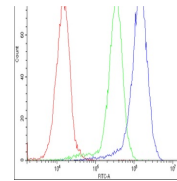
51737 MW

**Uniprot ID**
**P22003**
**Sensitivity**

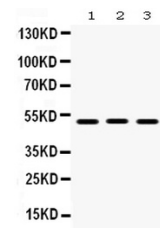
&gt; 5000 cells

**Expiration Date**

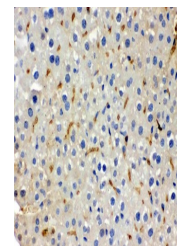
12 months from date of receipt.



Flow Cytometry analysis of U20S cells us...



WB analysis of BMP-5 using anti-BMP-5 an...



IHC analysis of BMP-5 using anti-BMP-5 a...