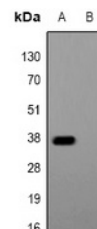


Product Datasheet

Glu-Glu-tag antibody (orb315831)

Description	Rabbit polyclonal antibody to Glu-Glu-tag
Species/Host	Rabbit
Conjugation	Unconjugated
Tested Applications	IP, WB
Immunogen	KLH-conjugated synthetic peptide EYMPME.
Preservatives	Liquid in PBS, pH 7.3, 0.2% rAlbumin, and 0.02% sodium azide.
Form/Appearance	Liquid in PBS, pH 7.3, 0.2% rAlbumin, and 0.02% sodium azide.
Storage	Maintain refrigerated at 2-8°C for up to 2 weeks. For long term storage store at -20°C in small aliquots to prevent freeze-thaw cycles.
Note	For research use only
Clonality	Polyclonal
Source	Rabbit
Dilution Range	WB: 1-500:1000, IP: 1-10:100
Expiration Date	12 months from date of receipt.



Western blot analysis of Anti-Glu-Glu-tag...