

---

## Product Datasheet

**14-3-3 theta/tau (Phospho-S232) antibody  
(orb315829)**

**Description**

Rabbit polyclonal antibody to 14-3-3

kDa A B C D E F

**Species/Host**

Rabbit

**Reactivity**

Human, Mouse, Porcine, Rat

**Conjugation**

Unconjugated

**Tested Applications**

IF, IH, WB

**Immunogen**

KLH-conjugated synthetic phosphopeptide corresponding to residues surrounding S232 of human 14-3-3 theta/tau protein. The exact sequence is proprietary.

**Target**

YWHAQ

**Preservatives**

Liquid in 0.42% Potassium phosphate, 0.87% Sodium chloride, pH 7.3, 30% glycerol, and 0.01% sodium azide.

**Form/Appearance**

Liquid in 0.42% Potassium phosphate, 0.87% Sodium chloride, pH 7.3, 30% glycerol, and 0.01% sodium azide.

**Storage**

Maintain refrigerated at 2-8°C for up to 2 weeks. For long term storage store at -20°C in small aliquots to prevent freeze-thaw cycles.

**Note**

For research use only

**Clonality**

Polyclonal

**Source**

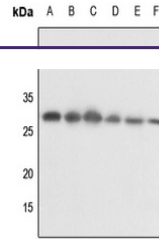
Rabbit

**Uniprot ID**
[P27348](#), [P68255](#), [P68254](#)
**Entrez**
[22630](#), [10971](#), [25577](#), [102634437](#)
**Dilution Range**

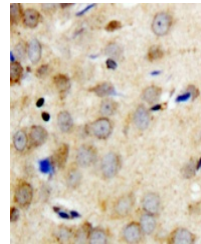
WB: 1-500:1000, IHC-P: 1-100:200, IF/ICC: 1-100:500

**Expiration Date**

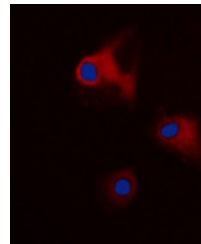
12 months from date of receipt.



Western blot analysis of 14-3-3 theta/ta...



Immunohistochemical analysis of 14-3-3 t...



Immunofluorescent analysis of 14-3-3 the...