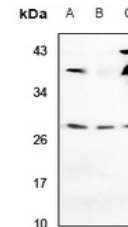


Product Datasheet

VTI1A antibody (orb315827)

Description	Rabbit polyclonal antibody to VTI1A
Species/Host	Rabbit
Reactivity	Human, Mouse, Rat
Conjugation	Unconjugated
Tested Applications	WB
Immunogen	KLH-conjugated synthetic peptide encompassing a sequence within the center region of human VTI1A. The exact sequence is proprietary.
Target	VTI1A
Preservatives	Liquid in 0.42% Potassium phosphate, 0.87% Sodium chloride, pH 7.3, 30% glycerol, and 0.01% sodium azide.
Form/Appearance	Liquid in 0.42% Potassium phosphate, 0.87% Sodium chloride, pH 7.3, 30% glycerol, and 0.01% sodium azide.
Storage	Maintain refrigerated at 2-8°C for up to 2 weeks. For long term storage store at -20°C in small aliquots to prevent freeze-thaw cycles.
Note	For research use only
Clonality	Polyclonal
Source	Rabbit
Uniprot ID	Q9JI51 , O89116 , Q96AJ9
Entrez	143187 , 65277 , 53611
Dilution Range	WB: 1-500:1000
Expiration Date	12 months from date of receipt.



Western blot analysis of VTI1A expression...