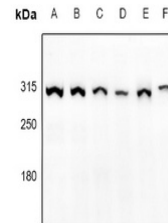


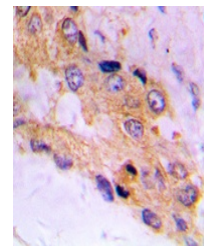
## Product Datasheet

### mTOR (Phospho-S2448) antibody (orb315804)

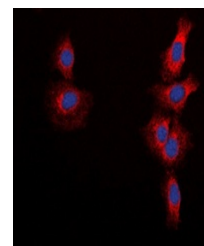
<b>Description</b>	Rabbit polyclonal antibody to mTOR and is also known as LST8 and MLST8. Diseases associated with MLS...
<b>Species/Host</b>	Rabbit
<b>Reactivity</b>	Human, Mouse, Rat, Sheep
<b>Conjugation</b>	Unconjugated
<b>Tested Applications</b>	IF, IH, WB
<b>Immunogen</b>	KLH-conjugated synthetic phosphopeptide corresponding to residues surrounding S2448 of human mTOR protein. The exact sequence is proprietary.
<b>Target</b>	mTOR
<b>Preservatives</b>	Liquid in 0.42% Potassium phosphate, 0.87% Sodium chloride, pH 7.3, 30% glycerol, and 0.01% sodium azide.
<b>Form/Appearance</b>	Liquid in 0.42% Potassium phosphate, 0.87% Sodium chloride, pH 7.3, 30% glycerol, and 0.01% sodium azide.
<b>Storage</b>	Shipped at 4°C. Upon delivery aliquot and store at -20°C for one year. Avoid freeze/thaw cycles.
<b>Note</b>	For research use only
<b>Clonality</b>	Polyclonal
<b>Source</b>	Rabbit
<b>Uniprot ID</b>	<a href="#">P42345</a> , <a href="#">Q9JLN9</a> , <a href="#">P42346</a>
<b>Entrez</b>	<a href="#">56717</a> , <a href="#">56718</a> , <a href="#">2475</a>
<b>Dilution Range</b>	WB: 1-500:1000, IHC-P: 1-100:200, IF/ICC: 1-100:500, IP: 1-10:100
<b>Expiration Date</b>	12 months from date of receipt.



Western blot analysis of mTOR (Phospho-S2448)



Immunohistochemical analysis of mTOR (Phospho-S2448)



Immunofluorescent analysis of mTOR (Phospho-S2448)