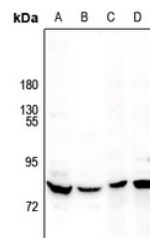


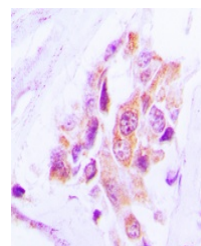
Product Datasheet

MARK antibody (orb315803)

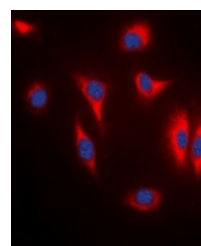
Description	Rabbit polyclonal antibody to MARK
Species/Host	Rabbit
Reactivity	Human, Mouse, Rat, Zebrafish
Conjugation	Unconjugated
Tested Applications	IF, IH, WB
Immunogen	KLH-conjugated synthetic peptide encompassing a sequence within the center region of human MARK. The exact sequence is proprietary.
Target	MARK1; MARK2; MARK3; MARK4
Preservatives	Liquid in 0.42% Potassium phosphate, 0.87% Sodium chloride, pH 7.3, 30% glycerol, and 0.01% sodium azide.
Form/Appearance	Liquid in 0.42% Potassium phosphate, 0.87% Sodium chloride, pH 7.3, 30% glycerol, and 0.01% sodium azide.
Storage	Maintain refrigerated at 2-8°C for up to 2 weeks. For long term storage store at -20°C in small aliquots to prevent freeze-thaw cycles.
Note	For research use only
Clonality	Polyclonal
Source	Rabbit
Uniprot ID	P27448 , O08678 , O08679 , Q8VHJ5 , Q8VHF0 , Q96L34 , Q8CIP4 , Q9P0L2 , Q05512 , Q03141 , Q7KZI7
Entrez	4140 , 17169 , 232944 , 170577 , 60328 , 226778 , 4139 , 117016 , 13728 , 57787 , 2011
Dilution Range	WB: 1-500:1000, IHC-P: 1-100:200, IF/ICC: 1-100:500
Expiration Date	12 months from date of receipt.



Western blot analysis of MARK expression...



Immunohistochemical analysis of MARK staining...



Immunofluorescent analysis of MARK staining...