
Product Datasheet

ERK1/2 (Phospho-T202/Y204) antibody (orb315802)

Description

Rabbit polyclonal antibody to ERK1/2

Species/Host

Rabbit

Reactivity

Human, Mouse, Rat

Conjugation

Unconjugated

Tested Applications

IH, WB

Immunogen

KLH-conjugated synthetic phosphopeptide corresponding to residues surrounding T202/Y204 of human ERK1/2 protein. The exact sequence is proprietary.

Target

MAPK1; MAPK3

Preservatives

Liquid in 0.42% Potassium phosphate, 0.87% Sodium chloride, pH 7.3, 30% glycerol, and 0.01% sodium azide.

Form/Appearance

Liquid in 0.42% Potassium phosphate, 0.87% Sodium chloride, pH 7.3, 30% glycerol, and 0.01% sodium azide.

Storage

Maintain refrigerated at 2-8°C for up to 2 weeks. For long term storage store at -20°C in small aliquots to prevent freeze-thaw cycles.

Note

For research use only

Clonality

Polyclonal

Source

Rabbit

Uniprot ID

[P21708](#), [P63085](#), [P28482](#), [P63086](#), [P27361](#), [Q63844](#)

Entrez

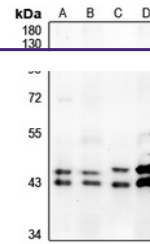
[26413](#), [26417](#), [5595](#), [50689](#), [5594](#), [116590](#)

Dilution Range

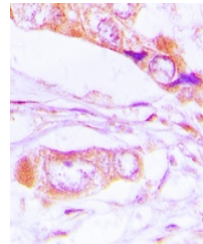
WB: 1-500:1000, IHC-P: 1-100:200

Expiration Date

12 months from date of receipt.



Western blot analysis of ERK1/2 (Phospho...



Immunohistochemical analysis of ERK1/2 (...