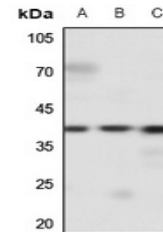


## Product Datasheet

### EDG2 antibody (orb315800)

|                            |   |
|----------------------------|---|
| <b>Description</b>         | Rabbit polyclonal antibody to EDG2  |
| <b>Species/Host</b>        | Rabbit  |
| <b>Reactivity</b>          | Human, Mouse, Rat, Sheep  |
| <b>Conjugation</b>         | Unconjugated  |
| <b>Tested Applications</b> | IF, WB  |
| <b>Immunogen</b>           | KLH-conjugated synthetic peptide encompassing a sequence within the N-term region of human EDG2. The exact sequence is proprietary.     |
| <b>Target</b>              | LPAR1   |
| <b>Preservatives</b>       | Liquid in 0.42% Potassium phosphate, 0.87% Sodium chloride, pH 7.3, 30% glycerol, and 0.01% sodium azide.                               |
| <b>Form/Appearance</b>     | Liquid in 0.42% Potassium phosphate, 0.87% Sodium chloride, pH 7.3, 30% glycerol, and 0.01% sodium azide.                               |
| <b>Storage</b>             | Maintain refrigerated at 2-8°C for up to 2 weeks. For long term storage store at -20°C in small aliquots to prevent freeze-thaw cycles. |
| <b>Note</b>                | For research use only   |
| <b>Clonality</b>           | Polyclonal  |
| <b>Source</b>              | Rabbit  |
| <b>Uniprot ID</b>          | <a href="#">P61793</a> , <a href="#">P61794</a> , <a href="#">Q92633</a>  |
| <b>Entrez</b>              | <a href="#">116744</a> , <a href="#">1902</a> , <a href="#">14745</a>   |
| <b>Dilution Range</b>      | WB: 1-500:1000, IF/ICC: 1-100:500   |
| <b>Expiration Date</b>     | 12 months from date of receipt.   |



Western blot analysis of EDG2 expression...



Immunofluorescent analysis of EDG2 stain...